

STATES OF JERSEY



DRAFT SEA FISHERIES (LES ECRÉHOUS) (JERSEY) REGULATIONS 201-

Lodged au Greffe on 23rd July 2018
by the Minister for the Environment

STATES GREFFE



Jersey

DRAFT SEA FISHERIES (LES ECRÉHOUS) (JERSEY) REGULATIONS 201-

REPORT

Following scientific evidence and discussions in the various Committees of the Granville Bay Agreement it was agreed to recommend the implementation of a parlour pot free zone at Les Ecréhous. These proposed Regulations prohibit the use of certain types of pots and traps in the area at Les Ecréhous defined in these Regulations.

Financial and manpower implications

There are no financial or manpower implications for the States arising from the adoption of these draft Regulations.

Explanatory Note

These Regulations prohibit the use of certain pots and traps for catching fish (other than molluscs) and shellfish such as lobsters, in the area of Les Ecréhous.

Regulation 1 defines the Les Ecréhous area by reference to a set of co-ordinates under the World Geodetic System 1984 and chartlet set out in the *Schedule* to these Regulations.

Regulation 2 prohibits the use of pots and traps described in this Regulation for the purpose of fishing for sea fish in the area of Les Ecréhous.

Regulation 3 provides for the title by which these Regulations may be cited and for their coming into force 7 days after they are made.



Jersey

DRAFT SEA FISHERIES (LES ECRÉHOUS) (JERSEY) REGULATIONS 201-

Arrangement

Regulation

1	Interpretation	7
2	Restrictions on the use of pots and traps in Les Ecréhous	7
3	Citation and commencement	8

SCHEDULE

AREA OF LES ECRÉHOUS	9
----------------------	---



Jersey

DRAFT SEA FISHERIES (LES ECRÉHOUS) (JERSEY) REGULATIONS 201-

Made [date to be inserted]
Coming into force [date to be inserted]

THE STATES, in pursuance of Articles 2, 5 and 29 of the Sea Fisheries (Jersey) Law 1994¹, have made the following Regulations –

1 Interpretation

In these Regulations –

“Les Ecréhous” means the area –

- (a) that is bounded by straight lines drawn in the sequences set out in Columns 1 and 2 of the table set out in the Schedule, as determined in accordance with the World Geodetic System 1984; and
- (b) depicted in the chartlet set out in the Schedule;

“parlour pot” means any pot, container or item whatsoever which is designed, adapted or intended to be used, or which is capable of being used, for the taking of crustaceans and which is a double-chambered pot, container or item, with the second chamber known as the parlour from which escape is restricted.

2 Restrictions on the use of pots and traps in Les Ecréhous

No person shall use, or cause to be used, for the purpose of fishing for sea fish in Les Ecréhous, or leave in the sea within Les Ecréhous –

- (a) any parlour pot;
- (b) any pot, other than a pot with an entrance that is –
 - (i) straight and unobstructed,
 - (ii) at least 14 cms wide,
 - (iii) made of rigid material, and
 - (iv) located in the top part of the pot; or
- (c) any pot or trap that is so constructed that fish (other than molluscs), having entered it, cannot escape from it.

3 Citation and commencement

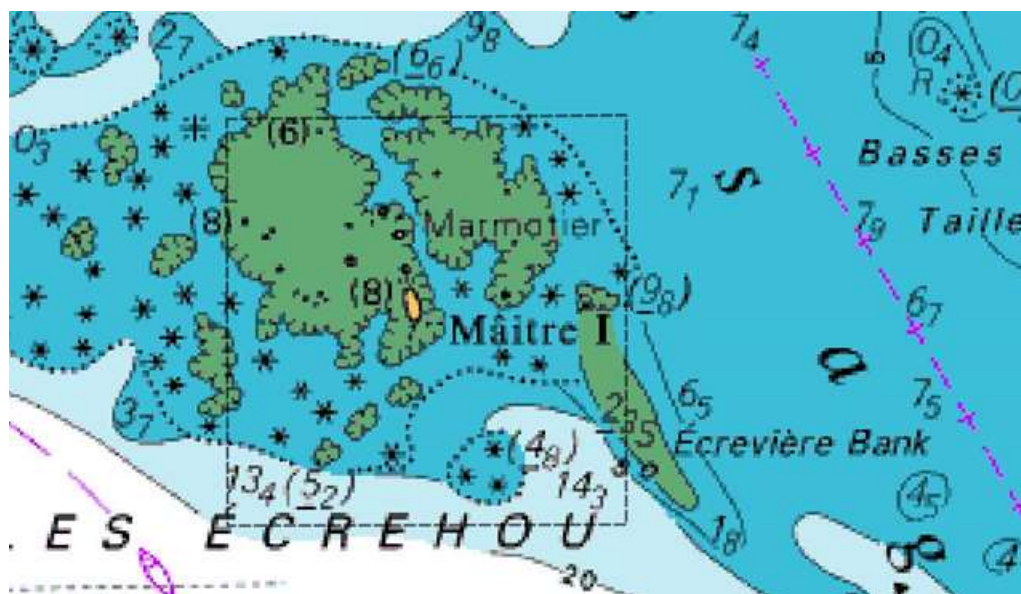
These Regulations may be cited as the Sea Fisheries (Les Ecréhous) (Jersey) Regulations 201- and shall come into force 7 days after the day they are made.

SCHEDULE

(Regulation 1)

AREA OF LES ECRÉHOUS

Column 1	Column 2
Latitude World Geodetic System 1984	Longitude World Geodetic System 1984
49°18.000N	001°54.000W
49°18.000N	001°57.000W
49°16.000N	001°54.000W
49°16.000N	001°57.000W



¹ *chapter 14.825*