

STATES OF JERSEY



ISLAND PLAN 2022-25: APPROVAL (P.36/2021) – FIFTY-FIRST AMENDMENT MARINE PARK

Lodged au Greffe on 12th July 2021
by Senator L. J. Farnham

STATES GREFFE

1 PAGE 2 –

After the words “the draft Island Plan 2022-25” insert the words “except that, within Strategic Proposal 3 –

- (a) after the words “Marine Spatial Plan” there should be inserted the words “before 2025”;
- (b) after the words “Jersey’s territorial waters” there should be inserted the words “, and in particular, to develop a network of marine protected areas which will”; and
- (c) after the words “economic and social objectives.” there should be inserted the words “In addition to the Marine Spatial Planning process, Jersey’s existing designated areas (Ramsar sites and Marine Protected Areas), as well as known areas of high-biodiversity and carbon value, extending approximately down to the 20m depth contour, should be protected via the designation of a national marine park. Such an area will be expected to cover approximately 900km², over 30% of Jersey’s territorial waters, and its designation will protect the area against inappropriate development and damaging activities.””.

2 PAGE 2 –

After the words “the draft Island Plan 2022-25” insert the words “except that, within Policy NE1 –

- (a) in the second paragraph the word “that” should be deleted and the word “importance” should be replaced with “protection”; and
- (b) after the words “Ramsar sites” there should be inserted the words “and areas of highest terrestrial and marine biodiversity, the latter extending approximately to the 20m depth contour.””.

3 PAGE 2 –

After the words “the draft Island Plan 2022-25” insert the words “except that, within Policy NE3 –

- (a) after the words “and its setting,” there should be included the words “including high value marine habitats”;
- (b) after the words “development within” there should be included the words “these areas”;
- (c) after the words “protect or improve” there should be included the word “their”;
- (d) after the words “of the park” should be included the words “and marine areas”;
- (e) within sub-paragraph a. after the first paragraph, after the words “heritage of the park” there should be included the words “and marine areas”; and
- (f) within sub-paragraph b. after the first paragraph, after the words “and enjoyment of” there should be included the word “their””.

4 PAGE 2 –

After the words “the draft Island Plan 2022-25” insert the words “except that the draft Island Plan 2022-25 should be further amended in such respects as may be necessary consequent to the adoption of the amendments to Strategic Proposal 3, Policy NE1 and Policy NE3.”

SENATOR L. J. FARNHAM

Note: After this amendment, the proposition would read as follows –

THE STATES are asked to decide whether they are of opinion –

to approve, in accordance with Article 3(1) of the Planning and Building (Jersey) Law 2002, as amended by the Covid-19 (Island Plan) (Jersey) Regulations 2021, the draft Island Plan 2022-25, **except that –**

1. within Strategic Proposal 3 -

- (a) after the words “Marine Spatial Plan” there should be inserted the words “before 2025”;
- (b) after the words “Jersey’s territorial waters” there should be inserted the words “, and in particular, to develop a network of marine protected areas which will”;
and
- (c) after the words “economic and social objectives.” there should be inserted the words “In addition to the Marine Spatial Planning process, Jersey’s existing designated areas (Ramsar sites and Marine Protected Areas), as well as known areas of high-biodiversity and carbon value, extending approximately down to the 20m depth contour, should be protected via the designation of a national marine park. Such an area will be expected to cover approximately 900km², over 30% of Jersey’s territorial waters, and its designation will protect the area against inappropriate development and damaging activities.”

2. within Policy NE1 –

- (a) in the second paragraph the word “that” should be deleted and the word “importance” should be replaced with “protection”; and
- (b) after the words “Ramsar sites” there should be inserted the words “and areas of highest terrestrial and marine biodiversity, the latter extending approximately to the 20m depth contour.”

3. within Policy NE3 –

- (a) after the words “and its setting,” there should be included the words “including high value marine habitats”;

- (b) after the words “development within” there should be included the words “these areas”;
- (c) after the words “protect or improve” there should be included the word “their”;
- (d) after the words “of the park” should be included the words “and marine areas”;
- (e) within sub-paragraph a. after the first paragraph, after the words “heritage of the park” there should be included the words “and marine areas”; and
- (f) within sub-paragraph b. after the first paragraph, after the words “and enjoyment of” there should be included the word “their”

4. the draft Island Plan 2022-25 should be further amended in such respects as may be necessary consequent to the adoption of the amendments to Strategic Proposal 3, Policy NE1 and Policy NE3.

REPORT

Inclusion of a Marine Park within the Jersey Bridging Island Plan

Introduction

Jersey has a once-in-a-generation opportunity to show leadership by creating a Marine Park in its waters that delivers for people and nature and rebrands the island as one of the world's most accessible marine eco-tourism destinations.

The States of Jersey has already made a strong commitment to marine conservation by establishing several areas protected from dredging and trawling (Figure 1). Marine habitats are already showing a strong recovery in these areas, benefitting fish stocks and other marine species. However, much of Jersey's waters remain unprotected.

A Marine Park would be expected to include all of Jersey's shallow marine habitats, extending down to 20 metres depth at a minimum. It would cover a total area of approximately 900km² or about 36% of Jersey's territorial waters. These high-value habitats, with respect to biodiversity, carbon sequestration, importance for sustaining fisheries and the wellbeing of Jersey's population, would be protected from inappropriate development and damaging activities through designation of a Marine Park.

Benefits

Carbon

Designation of a Marine Park would further build on Jersey's carbon commitments, as well as being an opportunity to trial carbon credit schemes within Jersey waters. As a small island, Jersey faces a limit to the amount of carbon sequestration that can be completed terrestrially. However, Jersey's high carbon sequestration marine habitats proposed for protection through designation of a Marine Park.

Economy

A Marine Park would provide a boost to local fisheries through enabling fish stock recovery and increasing catch price due to sustainable fishing methods, as demonstrated within the Lyme Bay Reserve. It would generate eco-tourism through promotion of outdoor marine-based activities as well as scientific funding.

Sustainable Low-Impact Fisheries

Over 85% of Jersey's commercial fishing fleet operate with comparatively low-impact static fishing gears such as pots and nets, targeting species such as whelk, lobster and crab. These fisheries rely on diverse and productive habitats for nurseries, food provision and spawning grounds. For the fishing industry to survive, effective protection of Jersey's marine habitats is crucial, to allow stock recovery and protection of important habitats. A sustainable local fishing industry can thrive, generating wider benefits such as increased employment, trade and an enhanced sense of cultural identity.

Biodiversity

Jersey's waters, with their kelp forests, seagrass and maerl beds, showcase some of the best shallow marine habitats in the British Isles. A Marine Park would deliver on Jersey's Planning and Building (Jersey) Law 2002, which was developed to 'conserve, protect and improve Jersey's natural beauty, natural resources and general amenities, its character and its physical and natural environments'.

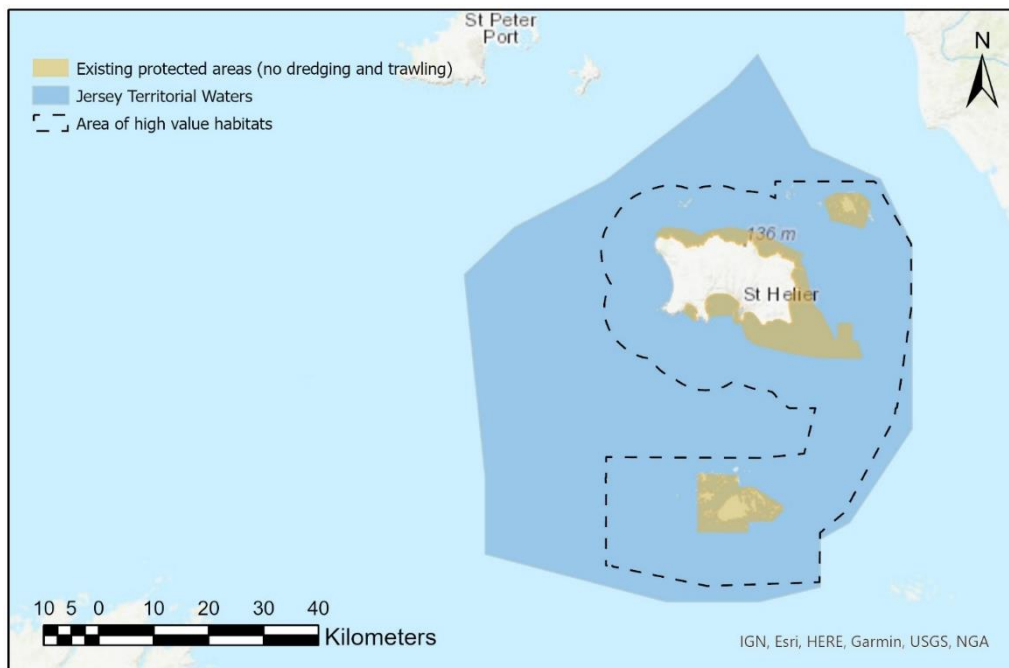
Wellbeing

If effectively managed, Jersey's clear waters, rocky intertidal habitats, offshore reefs and charismatic marine wildlife will bring opportunities for improved wellbeing and access to outdoor recreation.

Conclusion

The pledge to a future Marine Spatial Plan to manage activities in Jersey's marine waters is to be welcomed. However, an overwhelming weight of evidence already exists to illustrate the need for a Jersey Marine Park and the Bridging Island Plan provides the perfect opportunity to acknowledge the urgency that is required for protection.

Figure 1 – Jersey's territorial waters, existing protected areas and areas of high-value habitats



Financial and manpower implications

It is envisaged that the work required by this amendment would be covered by the existing Island Plan and Marine Resources teams and within the currently allocated budget as it relates to a strategic proposal already included in the Bridging island plan. Where this is not the case, and for any additional funding or officer support, a bid for

resources should be made through the Government Plan process, to enable the delivery of the strategic proposal.

Child Rights Impact Assessment review

This amendment has been assessed in relation to the [Bridging Island Plan CRIA](#). Protection of our coastal waters is in the best interests of our children – this is the development of a sustainable and ecologically robust area that will be safeguarded for their futures. The provision of a marine park would be in keeping with the terms of the UNCRC, promoting, in particular, Article 31 (Leisure, play and Culture), which speaks to children’s rights to relax and play, and Article 24 (Health) which speaks to a clean environment for children to grow up in.

Re-Issue Note

This amendment has been re-issued due to a wording error. The word ‘Policy’ has been replaced by ‘Proposal’ where relevant, in regard to ‘Strategic Proposal 3’.