

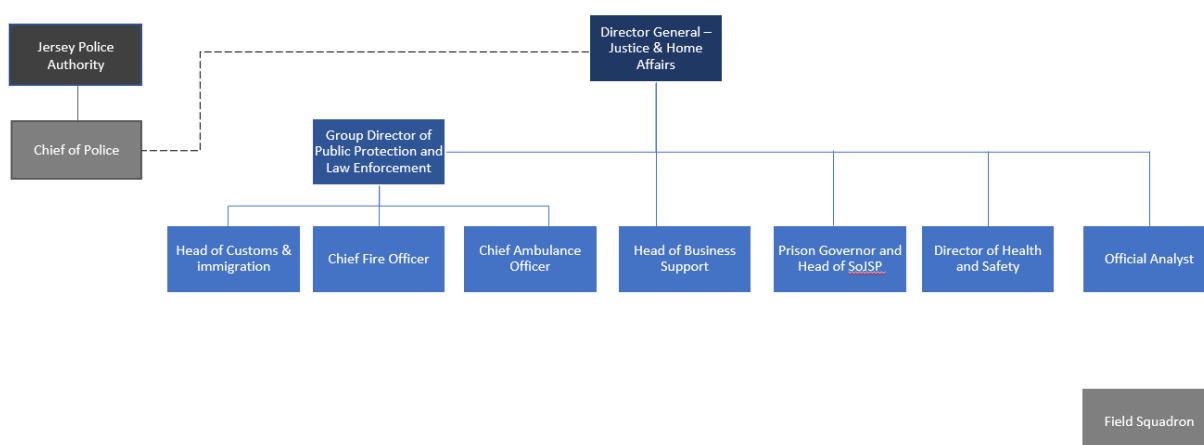
**WRITTEN QUESTION TO THE MINISTER FOR HOME AFFAIRS  
BY DEPUTY M.R. HIGGINS OF ST. HELIER  
ANSWER TO BE TABLED ON TUESDAY 30th JUNE 2020**

**Question**

Will the Minister provide members with an organisational chart for the Department of Justice and Home Affairs, including each division such as the States of Jersey Police, the Fire and Rescue Service, the Ambulance Service, Customs and Immigration and H.M.P. La Moye; and will he also set out for members the structure of this Department in terms of full-time equivalent (F.T.E.) employees and explain how the arrangement has changed in each division of the Department over the last four years?

**Answer**

An organisational chart for the Department of Justice and Home Affairs including States of Jersey Police, the Fire and Rescue Service, the Ambulance Service, Customs and Immigration and H.M.P. La Moye is set out below -



Please note that the structure of each division below the heads of service is still under development. Once the arrangements have been finalised, I will share the final structure with the Deputy.

The structure of the Department in terms of full time equivalent (F.T.E) employees and how these arrangements have changed in each division of the Department over the last five years is set out below -

	Actual FTE						
	Prison	JCIS	Fire & Rescue	Ambulance	Police	Police Officers	Police Staff
<b>2016</b>	158.9	86.8	76.5	64.1	318.7	214.8	103.9
<b>2017</b>	145.5	85.8	73.5	66.3	311.4	207.7	103.7
<b>2018</b>	150.3	85.8	67.1	73.5	294.7	194.2	100.5
<b>2019</b>	158.9	81.9	67.1	77.1	300.8	192.6	108.2
<b>2020</b>	145.9	77.68	69.18	81.3	316.2	199.3	116.9

Please note that these figures represent actual FTE. The numbers therefore vary from year to year depending on the number of leavers and joiners in a given year. For the years 2019 to 2016, the number is the position at the end of the year. For 2020, the number is the position on the 25th June.