

---

# STATES OF JERSEY



## LAND TRANSACTIONS UNDER STANDING ORDER 168(3) –

- (a) CAFÉ DES SPORTS AT LES QUENNEVAIS SPORTS FACILITY,  
ST. BRELADE – LEASE;
- (b) RAINBOW TOTS NURSERY, LES QUENNEVAIS, ST. BRELADE –  
LEASE.

---

Presented to the States on 19th September 2012  
by the Minister for Treasury and Resources

---

STATES GREFFE

**REPORT**

**Decision(s):** Under Standing Order 168(3) the Minister for Treasury and Resources hereby notifies the States that he has accepted the recommendation of the Property Holdings Department to agree to the following –

**(a) Land transaction –**

- (1) To approve the leasing-out of Café des Sports at Les Quennevais Sports Facility for a term of 9 years with effect from 2nd July 2012.
- (2) To confirm the above decision after giving the States 15 working days' notice of the transaction, and to cause the transaction to be completed.

After the expiry of 15 days following presentation to the States the transaction may be concluded.

*(Drawing attached at Appendix 1.)*

*Further information on this decision can be found on [www.gov.je](http://www.gov.je) under Ministerial Decisions/Treasury and Resources/Property Holdings (reference MD-PH-2012-0090).*

**(b) Land transaction –**

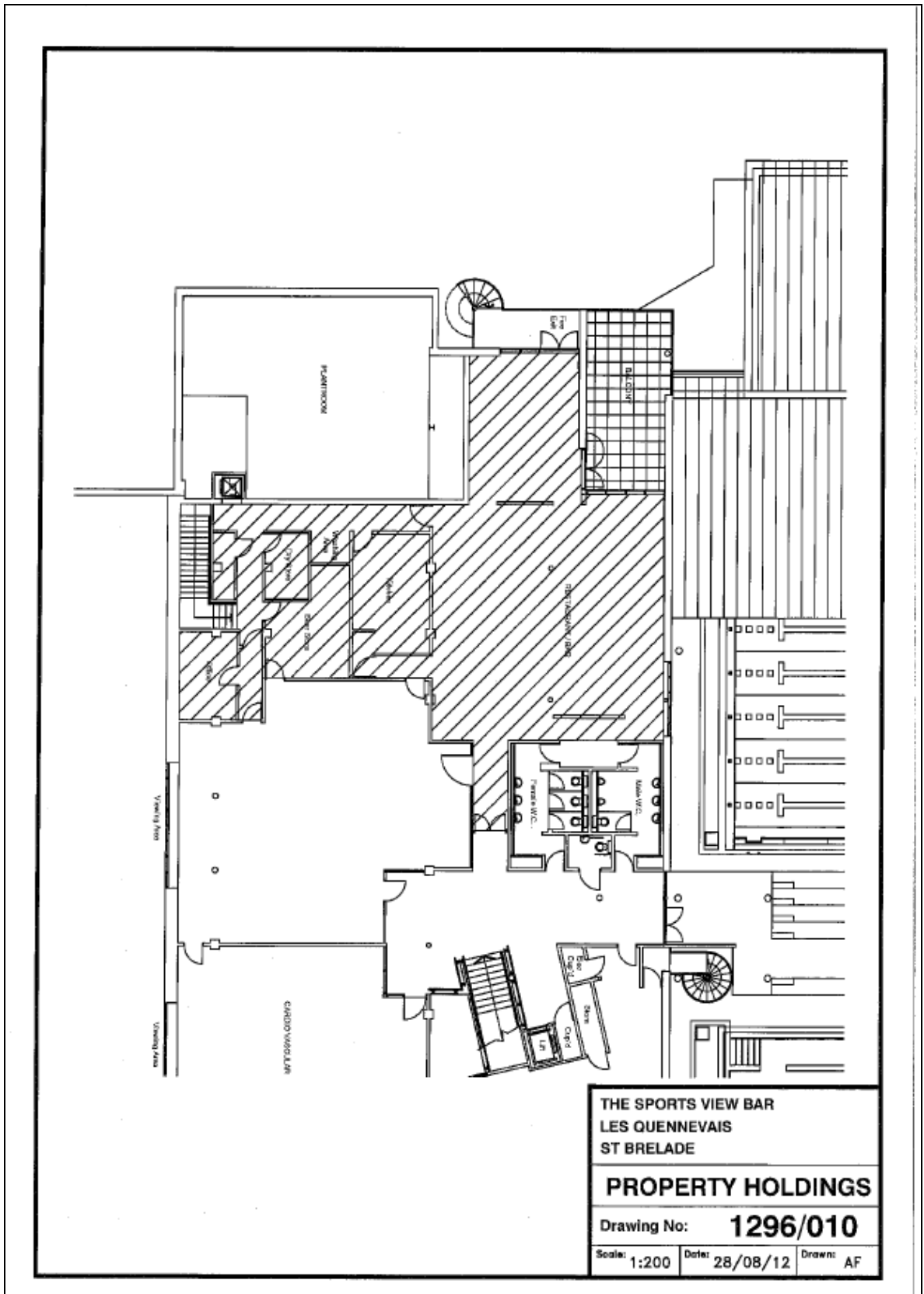
- (1) To approve the leasing-out of Rainbow Tots Nursery, Les Quennevais for a term of 9 years with effect from 1st January 2012.
- (2) To confirm the above decision after giving the States 15 working days' notice of the transaction, and to cause the transaction to be completed.

After the expiry of 15 days following presentation to the States the transaction may be concluded.

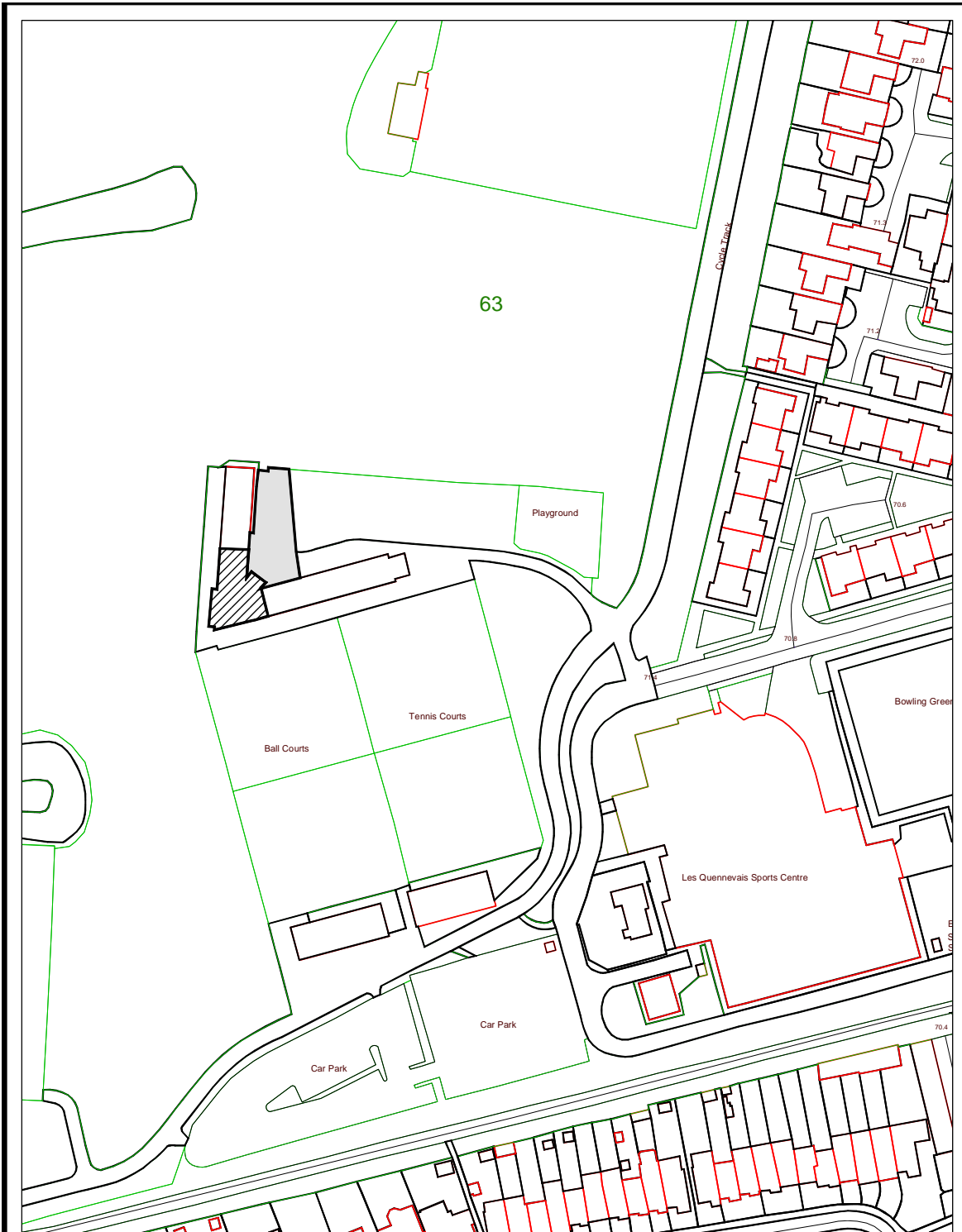
*(Drawing attached at Appendix 2.)*

*Further information on this decision can be found on [www.gov.je](http://www.gov.je) under Ministerial Decisions/Treasury and Resources/Property Holdings (reference MD-PH-2012-0091).*

APPENDIX 1



APPENDIX 2



RAINBOW TOTS NURSERY

Drawing No: 1296-01-017

Boundary Information Supplied by the States of Jersey Planning Office, but no responsibility can be accepted for error.



COPYRIGHT STATES OF JERSEY